



GOOD MORNING
Have Good Trading Day

WEDNESDAY



Price is what you pay.
Value is what you get.

- Warren Buffet



MARKET PULSE

INDIAN INDICES

NAME	CMP	NET CH.	%
SENSEX	24539	-285	-1.15
NIFTY	7455	-100	-1.33

INDIAN ADR'S

SYMBOL	CLOSE	GAIN/ LOSS %
DRREDDY	44.61	-1.48
HDFCBANK	58.67	-2.10
ICICIBK	6.02	-6.23
INFY	17.56	-1.18
TATAMOTOR	24.15	-5.29
WIPRO	11.77	-0.59

FII AND MF ACTIVITY

SYMBOL	In Crs.
FIIs Eq (Provisional)	-113.98
FIIs Index Future	-50.99
FIIs Index Options	-718.07
FIIs Stock Future	-393.22
FIIs Stock Options	1.87
DII's Eq (Provisional)	-323.23

CURRENCY

RBI RATE	02-FEB-2016
RUPEE - \$	67.8340
EURO	73.9323
YEN 100	56.2100
GBP	97.6131

MARKET PULSE

GLOBAL INDICES

NAME	CMP	NET CH.	%
DOW	16153	-295	-1.80
NASDAQ	4516	-103	-2.24
NIKKEI	17194	-556	-3.14
HANG SENG	18884	-562	-2.89
SGX NIFTY	7398	-68	-0.92

WORLD COMMODITIES

FUTURE	US\$	CHANGES
CRUDE	29.71	-0.17
NATURAL GAS	2.040	+0.015
GOLD	1128.6	+1.4
SILVER	14.300	+0.011
COPPER	2.0515	-0.0035

WORLD EVENTS

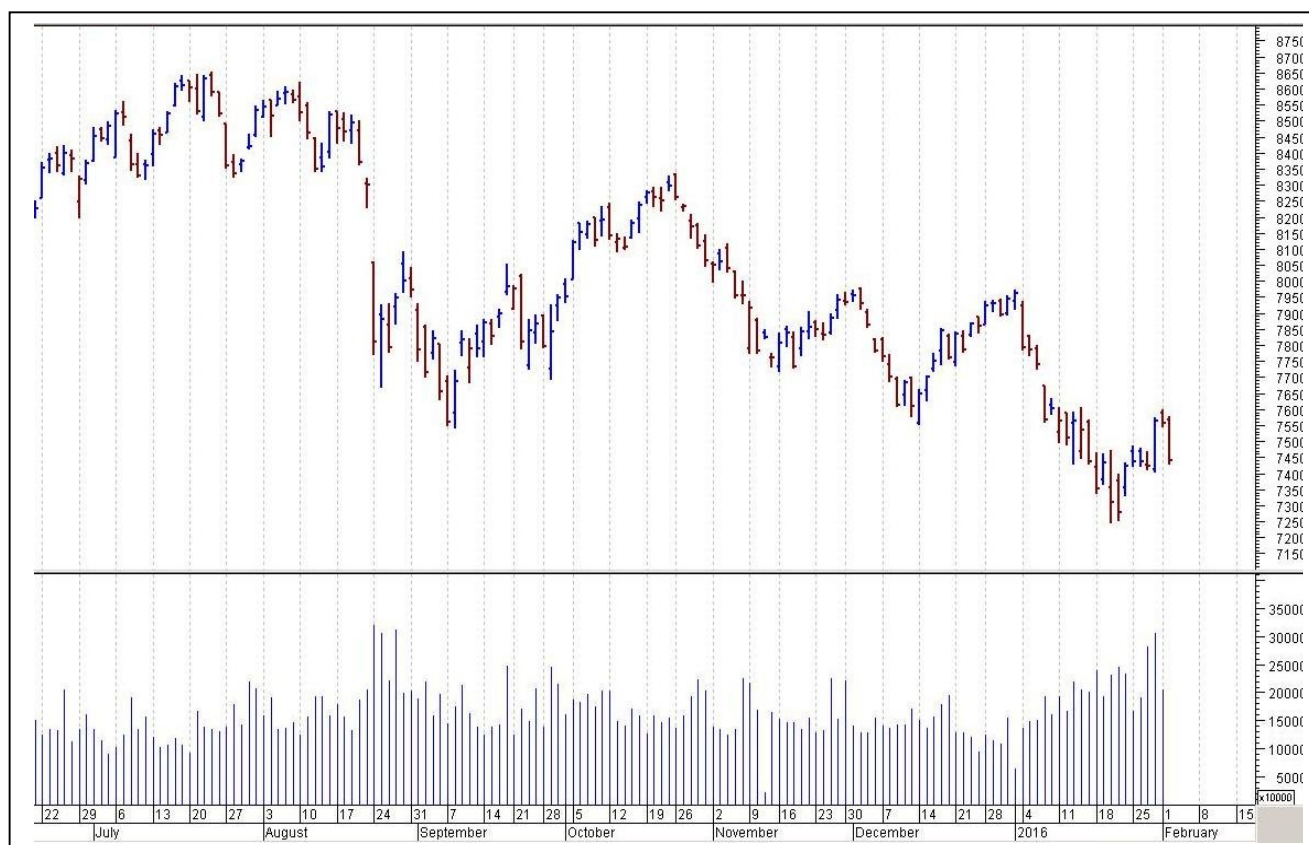
- US:ADP Non-Farm Employment Change
- ISM Non-Manufacturing PMI
- Crude Oil Inventories
- UK:Services PMI

TOP STORY

- Crompton Greaves Q3 Cons Net Loss At `107 Cr Vs Profit Of `274.3 Cr (YoY) Cons Total Income At `2,067.8 Cr Vs `2,409.3 Cr (YoY)
- DLF Q3 Cons Net Profit At `164 Cr Vs `131.8 Cr (YoY) Cons Total Income At `2,827.7 Cr Vs `1,956.7 Cr (YoY)
- Birla Corporation Says: Lafarge Will Not Proceed With The Agreement. Will Not Acquire Jojobera&Sonadih Plants From Lafarge As Agmt Called Off
- Sun TV partners With YuppTV To Launch 10 Channels In Middle East & North Africa
- Adani Enterprises' coal Mine Project In Australia Gets Environmental Approval
- SEBI Imposes Penalty Worth `23.3 Cr On PACL Management
- Shriram Properties to Invest `3,000 Cr To Set Up An Amusement Park
- GAIL Says Will Work In Coordination W/Tamil Nadu Govt To Restart Pipeline Laying Work



NIFTY CHART



MARKET COMMENTARY

Extending their previous session southward journey, Indian barometer gauges witnessed blood bath with both the major indices losing over a percent and ending below their crucial 7,500 (Nifty) and 24,600 (Sensex) levels. Initially domestic gauges kept altering between green and red terrain for the most part of session but they crashed like house of card in the last leg of trade as sentiments turned down-beat after Reserve Bank of India (RBI) maintained status quo on rates. RBI's Governor RaghuramRajan opted to keep the policy repo rate unchanged on inflation concerns even as it emphasized that it continues to be accommodative. It has also left the cash reserve ratio of scheduled banks unchanged at 4.0 per cent. For today's trade Nifty likely to trade in the range between 7465 – 7495 in the upper side and 7435 – 7415 in the lower side.

MARKET LEVELS

	CMP	SUPPORT LEVELS				RESISTANCE LEVELS			
NIFTY	7455	7435	7415	7375	7345	7465	7495	7525	7545
USDINR	68.26	68.15	68.05	67.95	67.85	68.35	68.45	68.5	68.55



FUTURES CORNER

SCRIPS	CLOSE	SUPPORT	TARGET		REMARKS
		STOP LOSS	T1	T2	
POWERGRID (SELL)	145.9	147.5	143.5	141.5	TRADING CALL
HDFCBANK (SELL)	1059.35	1065	1045	1035	TRADING CALL
JUBLFOOD (SELL)	1221.2	1235	1205	1185	TRADING CALL

EQUITY CORNER

SCRIPS	CLOSE	SUPPORT	TARGET		REMARKS
		STOP LOSS	T1	T2	
NO CALLS					

DELIVERY BASED CALL / INVESTMENT CALL

SCRIPS	CMP	SUPPORT	TARGET		REMARK
		STOP LOSS	T1	T2	

BULK DEALS (BSE)

SCRIP	CLIENT NAME	BUY/SELL	QUANTITY	PRICE
PRIMAPLA	MOHUR INVESTMENT AND CONSULTANCY PVT LTD	B	100,000	138.82
RCIIND	HARSHIT FINVEST PVT LTD	B	66,000	40.6

BULK DEALS (NSE)

SCRIP	CLIENT NAME	BUY/SELL	QUANTITY	PRICE
HEIDELBERG	FRANKLIN INDIA SMALLER COMPANIES FUND	BUY	2368515	71.5
HEIDELBERG	JUPITER SOUTH ASIA INVESTMENT CO LTD SOUTH ASIA ACCESS FUND	SELL	2003717	71.5
RPPINFRA	M/S MENTOR CAPITAL LIMITED	BUY	150704	134.98

SCRIP'S IN F&O BAN

(To resume for normal trading below 80% of market wide limit required)

NIL



NIFTY 50 STOCKS: SUPPORT & RESISTANCE

Symbol	Close	Support 1	Support 2	Pivot Point	Resistance1	Resistance2
ACC	1261.35	1248.60	1235.85	1265.80	1278.55	1295.75
ADANIPIR	213.25	208.65	204.05	216.30	220.90	228.55
AMBUJACEM	196.60	194.15	191.70	198.05	200.50	204.40
AXISBANK	390.90	384.85	378.80	394.65	400.70	410.50
ASIANPAINT	882.50	875.42	868.33	885.08	892.17	901.83
BAJAJ-AUTO	2364.10	2314.60	2265.10	2349.50	2399.00	2433.90
BANKBARODA	120.95	118.08	115.22	122.97	125.83	130.72
BHARTIARTL	302.20	297.27	292.33	300.63	305.57	308.93
BHEL	134.80	132.50	130.20	136.60	138.90	143.00
BOSCHLTD	17012.80	16877.10	16741.40	17093.55	17229.25	17445.70
BPCL	850.30	839.17	828.03	856.73	867.87	885.43
CAIRN	118.15	115.88	113.62	119.57	121.83	125.52
CIPLA	574.00	555.32	536.63	580.68	599.37	624.73
COALINDIA	318.95	312.77	306.58	322.68	328.87	338.78
DRREDDY	3048.50	3023.80	2999.10	3065.70	3090.40	3132.30
GAIL	361.70	358.30	354.90	363.40	366.80	371.90
GRASIM	3439.20	3408.67	3378.13	3443.83	3474.37	3509.53
HCLTECH	872.65	864.80	856.95	874.90	882.75	892.85
HDFC	1179.80	1166.58	1153.37	1179.72	1192.93	1206.07
HDFCBANK	1053.80	1047.58	1041.37	1056.42	1062.63	1071.47
HEROMOTOCO	2518.30	2501.02	2483.73	2525.88	2543.17	2568.03
HINDALCO	68.55	67.23	65.92	69.52	70.83	73.12
HINDUNILVR	800.10	794.72	789.33	802.33	807.72	815.33
ICICIBANK	210.40	206.83	203.27	213.27	216.83	223.27
IDEA	104.05	102.55	101.05	104.70	106.20	108.35
INDUSINDBK	908.25	897.37	886.48	914.68	925.57	942.88
INFY	1175.55	1163.03	1150.52	1176.52	1189.03	1202.52
ITC	324.25	321.83	319.42	323.87	326.28	328.32
KOTAKBANK	677.15	668.77	660.38	679.88	688.27	699.38
LT	1121.90	1106.93	1091.97	1125.97	1140.93	1159.97
LUPIN	1705.80	1692.33	1678.87	1713.47	1726.93	1748.07
M&M	1206.65	1190.67	1174.68	1215.98	1231.97	1257.28
MARUTI	3874.95	3822.67	3770.38	3903.83	3956.12	4037.28
NTPC	134.05	131.03	128.02	135.77	138.78	143.52
ONGC	216.55	213.17	209.78	218.78	222.17	227.78
PNB	89.50	88.03	86.57	90.52	91.98	94.47
POWERGRID	146.25	144.05	141.85	147.20	149.40	152.55
RELIANCE	1001.15	983.50	965.85	1008.15	1025.80	1050.45
SBIN	169.40	166.20	163.00	171.80	175.00	180.60
SUNPHARMA	835.15	816.38	797.62	849.87	868.63	902.12
TATAMOTORS	329.55	323.27	316.98	333.98	340.27	350.98
TATAPOWER	58.75	57.82	56.88	59.33	60.27	61.78
TATASTEEL	231.45	224.03	216.62	237.52	244.93	258.42
TECHM	474.45	464.58	454.72	481.97	491.83	509.22
TCS	2398.10	2374.20	2350.30	2403.60	2427.50	2456.90
ULTRACEMCO	2802.70	2770.03	2737.37	2813.02	2845.68	2888.67
VEDL	64.90	62.93	62.07	64.47	65.33	66.87
WIPRO	567.25	563.78	560.32	567.67	571.13	575.02
YESBANK	764.30	754.80	745.30	769.90	779.40	794.50
ZEEL	401.65	395.60	389.55	406.05	412.10	422.55



CORPORATE ACTION / BOARD MEETINGS

NSE Download Ref.No.:NSE/CML/31635:- ESSAROIL will be suspended from trading w.e.f February 10, 2016 on account of Voluntary delisting

NSE Download Ref.No.:NSE/SURV/31633:- Max India Limited (MAX) shall be transferred from trade for trade Segment (series: BE) to rolling segment (series: EQ) w.e.f, February 10, 2016 (Wednesday).

NSE Download Ref.No.:NSE/CML/31646:- Change in Name of the Company-WelspunSyntex Limited to AYM Syntex Limited w.e.f. February 3, 2016. Symbol will change from WELSYNTEX to AYMSYNTEX

NSE Download Ref.No.:NSE/SURV/31657:- Jindal Stainless (Hisar) Limited (JSLHISAR) shall be transferred from trade for trade segment (series: BE) to rolling segment (series: EQ) with effect from February 11, 2016 (Thursday).

BOARD MEETINGS

COMPANY NAME	DATE	PURPOSE	RS. PER SH.
GODREJCP	3-Feb-16	Dividend	1
DBCORP	3-Feb-16	Dividend	3.5
POWERGRID	3-Feb-16	Dividend	0.8
ASHOKA	3-Feb-16	Dividend	0.7
SYMPHONY	4-Feb-16	Dividend	5
ALKALI	4-Feb-16	Dividend	0.8
AEGISCHEM	4-Feb-16	Dividend	0.3
TVSMOTOR	4-Feb-16	Dividend	1
BEL	4-Feb-16	Dividend	2.5
IIFL	5-Feb-16	Dividend	
MPSLTD	5-Feb-16	Dividend	8
GAEL	5-Feb-16	Dividend	
MARICO	5-Feb-16	Dividend	
NTPC	5-Feb-16	Dividend	1.6
CONCOR	5-Feb-16	Dividend	8
GRANULES	8-Feb-16	Dividend	0.15
VRLOG	8-Feb-16	Dividend	
VIPIND	8-Feb-16	Dividend	
SHANTIGEAR	8-Feb-16	Dividend	0.5
TCI	8-Feb-16	Dividend	
WENDT	9-Feb-16	Dividend	10
AVTNPL	9-Feb-16	Dividend	0.2

NEWS & RUMOURS:

- Gold (Spot Dollar) major support = \$1098/\$1071 & Resistance = \$1150/\$1186.
- Crude oil range->\$25 to \$35.
- Stocks Drop as Deepening Oil Rout Hits Earnings; Treasuries Jump: - Stocks fell around the world as oil's renewed plunge toward \$30 a barrel in New York rekindled concern that global growth is slowing. Treasuries rose with the yen.
- Natural gas prices plunge below \$2 on forecasts for warmer weather: - U.S. natural gas futures plunged below the \$2-level on Tuesday, as forecasts calling for warmer weather through the middle of February weighed. Forecasts originally called for cold winter weather during the period. Bearish speculators are betting on the mild winter weather to reduce demand for the heating fuel. The heating season from November through March is the peak demand period for U.S. gas consumption.
- Oil sinks 5% as markets brace for more supply from Iran: - Oil prices sold off for the second straight session on Tuesday, after Iran said it planned to increase crude exports to 2.3 million barrels per day in its next fiscal year, starting March 21. The comments triggered fresh losses in the oil market, as traders worried that Iranian supplies will add to a global surplus.
- Gold climbs to fresh 3-month high amid delayed Fed rate hike hopes: - Gold futures rose to a fresh three-month high in Europe trade on Tuesday, amid growing skepticism over the Federal Reserve's ability to raise interest rates as much as it would like this year. [A day earlier](#), gold rallied \$11.60, or 1.04%, as weak [U.S. manufacturing data](#) added to speculation the Federal Reserve may slow any planned interest rate hikes.

TRENDS & OUTLOOK – DATE: 03- Feb- 2016

PRECIOUS METALS:

COMMDITY (MCX)	S2	S1	PIVOT POINT	R1	R2
GOLD (Apr)	26470	26730	26970	27250	27566
SILVER (Mar)	32700	33800	34900	36000	37200

BASE METALS

COMMDITY (MCX)	S2	S1	PIVOT POINT	R1	R2
COPPER (Feb)	300	304	310	315	320
ZINC (Feb)	108.30	110.10	112.75	115.45	117.70
LEAD (Feb)	115.20	117.30	119.50	122.20	124.70
NICKEL (Feb)	545	561	579	594	609

ENERGY

COMMDITY (MCX)	S2	S1	PIVOT POINT	R1	R2
CRUDE OIL (Feb)	1850	1975	2091	2199	2320
NATURAL GAS (Feb)	127	132	140	147	153

DATE TALKS : TODAY'S ECONOMIC DATA :

Caixin Services PMI of China, BOJ Gov Kuroda Speaks, Services PMI of GBP, ADP Non-Farm Employment Change, Final Services PMI, ISM Non-Manufacturing PMI, Crude Oil Inventories.



Registered Office

Indira House, 3rd Floor, 5 Topiwala Lane,
Opp. Lemington Road Police Station, Grant Road (East), Mumbai - 400007.

Corporate Office

'Ramavat House' E-15, Saket Nagar, Indore - 452018 (M.P.)

Customer Care

Tel: +91-731-4097170/ 71/ 72/ 73/ 74 M. +91 93031 72345

Email: customercare@indiratrade.com www.indiratrade.com



INSTITUTIONAL DEALING UNIT

Africa House, 5, Topiwalla Lane, Lamington Road, Mumbai, 400007

Tel: +91 22 30080678 Fax : +91 22 23870767 Email : ie@indiratrade.com

Disclaimer

This report is for private circulation within the Indira Group. This report is strictly confidential and for information of the selected recipient only and may not be altered in any way, transmitted to, copied or distributed, in part or in whole, to any other person or to the media or reproduced in any form. This report should not be construed as an offer or solicitation to buy or sell any securities or any interest in securities. It does not constitute a personal recommendation or take into account the particular investment objectives, financial situations, or any such factor. The information, opinions estimates and forecasts contained here have been obtained from, or are based upon, sources we believe to be reliable, but no representation of warranty, express or implied, is made by us to their accuracy or completeness. Opinions expressed are our current opinions as of the date appearing on this material only and are subject to change without notice.